

HERMOSA BAY

House design - single floor



Your home and garden will be the perfect space for all the family to relax in



Light and views of nature in the welcoming living area



You'll find comfort, convenience and quality



You'll enjoy spectacular contemporary living in natural surroundings in your spacious 110 m² – 1,184 ft² two-bedroom home. Your dream space is carefully created by professional architects, designers and constructors from the respected team behind Hotel Bocas del Mar.

House design - single floor

Surface area: 110 m² – 1,184 ft²
Covered terraces: 47 m² – 506 ft²
Surface + covered terraces: 157 m² – 1,690 ft²

15.1 m – 49.54 ft

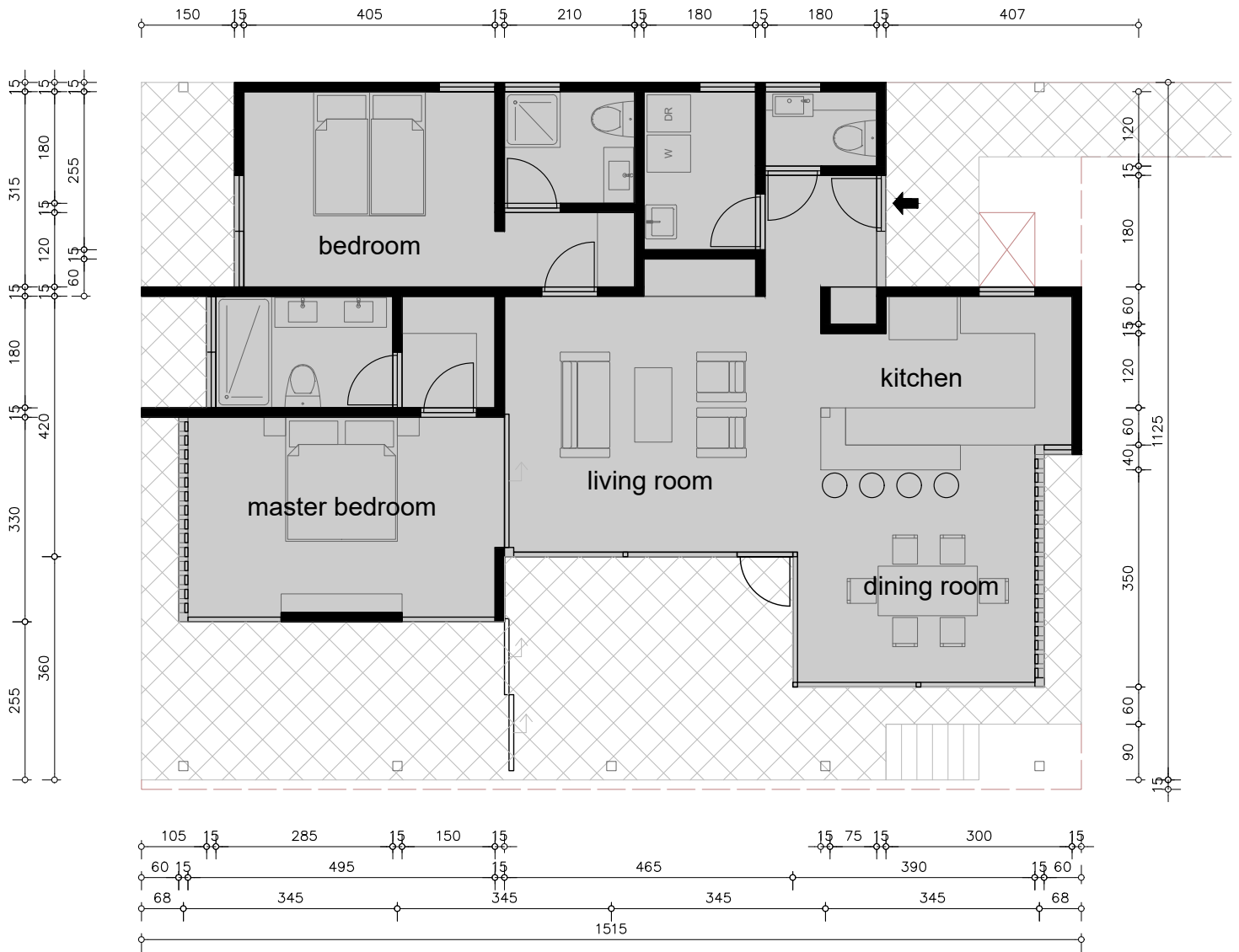
11.2 m – 36.74 ft





House design - single floor

Surface area: 110 m² – 1,184 ft²
 Covered terraces: 47 m² – 506 ft²
 Surface + covered terraces: 157 m² – 1,690 ft²



Line dimensions shown in centimeters

Modern life and nature in perfect harmony



HERMOSA BAY



A terrace perfect to unwind on and soak in ocean and garden views

Beautiful optional house designs for both one and two floor properties are available for lots at Hermosa Bay.

See the separate information sheet for the two-floor design.

Consult the lot plan for information on which lots can have houses of up to two floors.